



Mt. Holly Wildlife Corridor

Forest Legacy Tract, Vermont

December 2002

The USDA Forest Service Forest Legacy Program enhanced efforts by State and Federal agencies, and local land trusts, creating a corridor of protected land that lies between the north and south units of the Green Mountain National Forest. A total of 664 acres of forest land on two properties, now protected from conversion to nonforest uses, is part of the first phase of Vermont's Mt. Holly Wildlife Corridor Forest Legacy project. The property has historically been managed for the sustainable harvest of timber. Management of the property's timber resources will continue under the direction of a Forest Stewardship Plan approved by the State of Vermont.

On December 23, 2002, the State of Vermont acquired a conservation easement on 391 acres from the landowner, the Ninevah Foundation. The funds to acquire the conservation easement, valued at \$303,000, came entirely from the Forest Legacy Program. As with all Forest Legacy Program funds, a non-Federal cost-share of 25 percent of the total project cost is required. The State of Vermont exceeded the required cost-share through the full fee purchase of a nearby 273-acre tract for \$340,000 on December 31, 2002.

The Forest Legacy Program had previously protected other lands in the corridor between the two units of the Green Mountain National Forest.

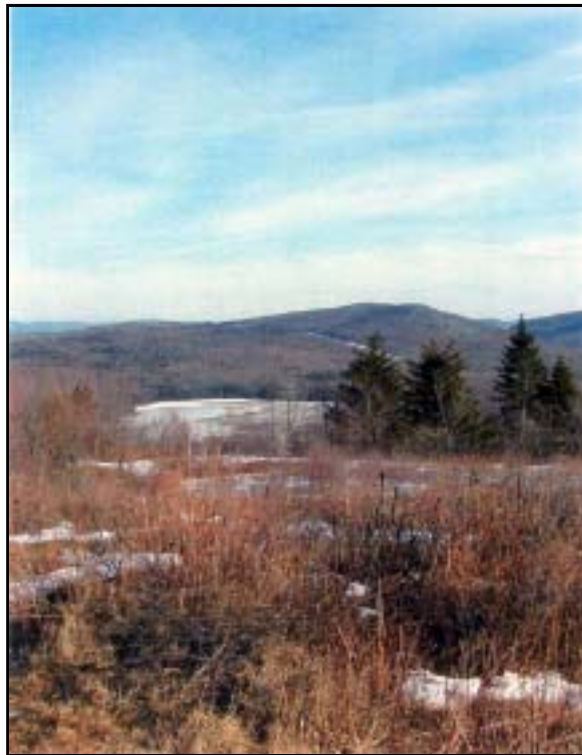
The 2,086-acre Wilderness Corporation Tract was protected with funds from the Forest Legacy Program on October 02, 1996, and the 560-acre Snow property was protected on September 19, 1997. The Vermont Forest Stewardship Coordinating Committee has identified additional

tracts in the area for future protection using Forest Legacy Program funds. Protecting the corridor is necessary to keep wildlife travel corridors open, especially for black bears. Between local, State, and Federal efforts, over \$12 million has been spent acquiring lands and conservation easements in the corridor so that it will continue to be available for wildlife.

In addition to protecting the forests and the habitat for wildlife, limited dispersed recreation will occur on the property, with restrictions in place to keep from damaging critical habitat areas.

The Forest Legacy Program protects important forests from conversion to

nonforest uses. These forests provide essential wildlife habitat, protect water quality, offer outstanding recreation opportunities, afford outstanding scenic views, are home to historic sites, and/or provide the opportunity to continue traditional forest uses. A Federal-State partnership allows landowners to keep their land private while ensuring it remains forest forever through the use of conservation easements.



Black bears and other wildlife will continue to travel between the north and south units of the Green Mountain National Forest.

Vermont File Photo